

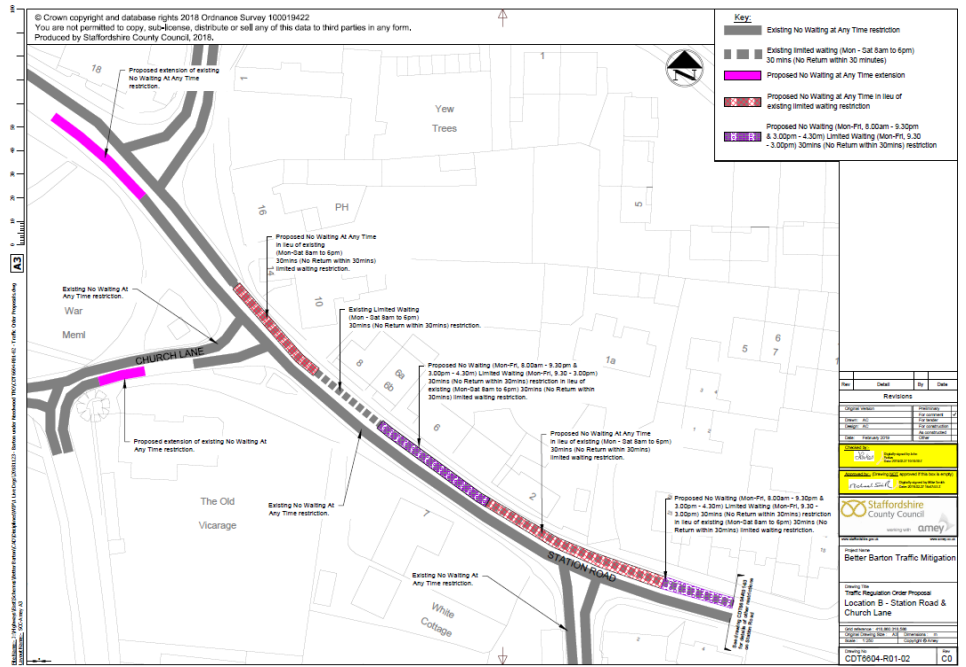
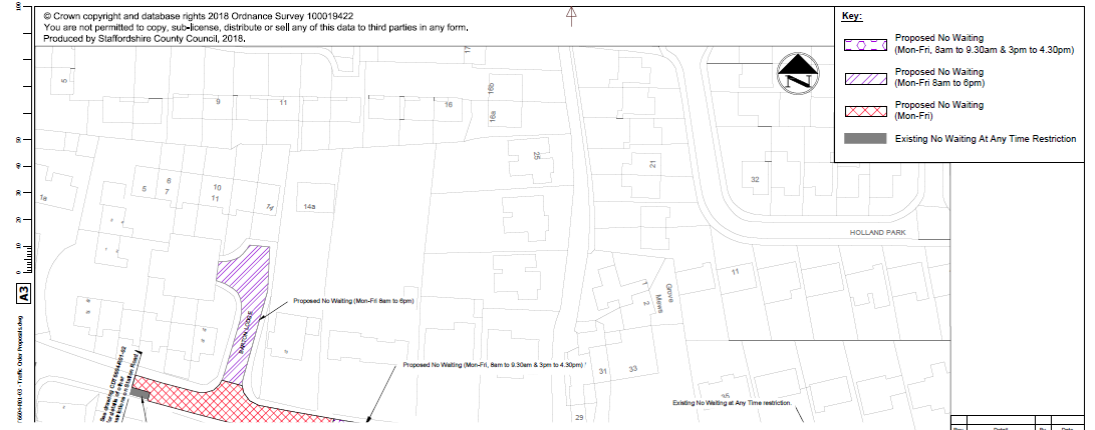
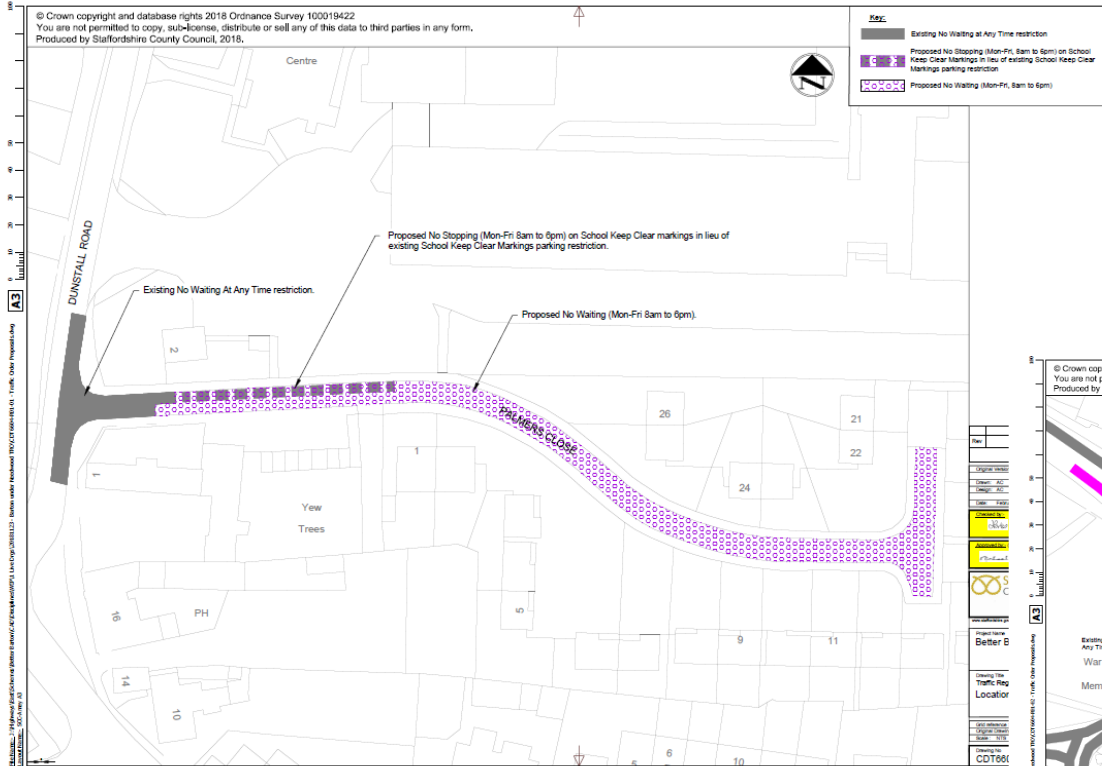


C18 Weight Limit

- Parish Council worked with Staffordshire County Council on a TRO which implemented:
 - a reduction in the speed limit on the C0018 Forest Road between Barton Gate and the village of Rangemore. The National speed limit was reduced to 50 mph along its length to avoid danger to persons or other traffic using the road, or for preventing the likelihood of any such danger arising. An environmental weight limit covers an area bordered by the A515 to the west, the B5234 to the north, the C0018 to the east and finally the B5016 to the south which prevents vehicles over 7.5t from entering the zone, unless for access. The introduction of this order helps to support other measures introduced in the area to improve the environment and reduce unnecessary HGV movements through the many villages located within the zone, particularly Barton.
- Lorries have reduced.



Parking Restrictions

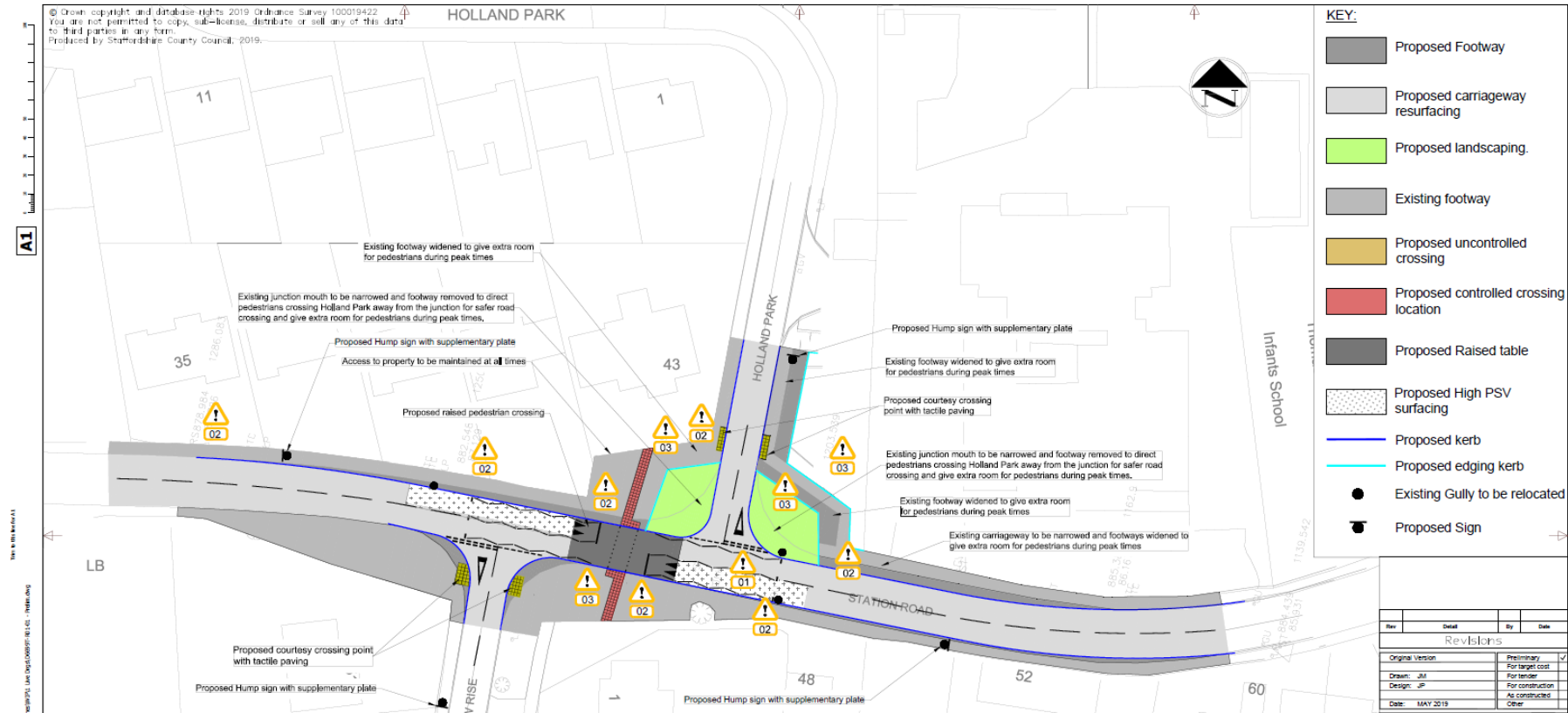


Rev	Desc	By	Date
Revisions			
1	Issue for comment	AM	20/05/2017
2	Issue for comment	AM	20/05/2017
3	Issue for comment	AM	20/05/2017
4	Issue for comment	AM	20/05/2017
5	Issue for comment	AM	20/05/2017
Approved by Staffordshire County Council			
Better Barton Traffic Mitigation			
Drawing title: Traffic Regulation Order Proposal			
Location C - Station Road & Barton Lodge			
CDT6904-R01-03	CD		

Rev	Desc	By	Date
Revisions			
1	Issue for comment	AM	20/05/2017
2	Issue for comment	AM	20/05/2017
3	Issue for comment	AM	20/05/2017
Approved by Staffordshire County Council			
Better Barton Traffic Mitigation			
Drawing title: Traffic Regulation Order Proposal			
Location B - Station Road & Church Lane			
CDT6904-R01-02	CD		



Infants School Traffic Calming



Staffordshire County Council Capital Project



Initiated Speedwatch

2018 Summary

A total of 13424 vehicles were observed, 493 or 3.67% were speeding and the worst offender was caught travelling 22mph over the speed limit.

Note: 80% of drivers caught speeding and contacted by the police live within a 20 mile radius of the village, indeed a massive 78.3% actually have DE13 post codes.*

2017 Summary

A total of 11758 vehicles were observed, 626 or 5.32% were speeding and the worst offender was caught travelling 36mph over the speed limit.

2016 Summary

A total of 7821 vehicles were observed, 326 were exceeding the speed limit by 6+ mph. This is 4.17%. The fastest was exceeding the limit by 27mph.

*Police statistics July 2018

To the end of May 2019, a total of 5948 vehicles have been observed. 212 were exceeding the speed limit. The fastest was exceeding the speed limit by 18mph.



Community Speed Watch - Signage

There is no legal requirement to place any signs at a monitoring site. Where permanent Community Speed Watch signs are in place temporary mobile signs will not be displayed.

If you have any comments or complaints, please do not raise these with the volunteers who are simply following instructions.

Contact Staffordshire Police on email address:
CSW@staffordshire.pnn.police.uk

Please note: we will not tolerate abusive, threatening or insulting behaviour towards our Police Volunteers and will take appropriate action if necessary.